



Physical Test Solutions

Innovative Solutions in Material Test Equipment

HCT-28 HORIZONTAL CREEP TESTING MACHINE

Introduction

The HCT-28 combines electromechanical load application with dead weight long term creep tension. The load frame includes crossheads and frame. The crosshead connects to the front crosshead through adjusting screws. The front grips and load cell are fixed to the crosshead. The rear grips connect the rear crosshead by tension rod and rope. There is one linear bearing between tension rod and bracket. That makes a coaxial force and also lowers the friction.

After the specimen is clamped, the specimen will be pre-tensioned by the crosshead. The turning bracket amplifies the tension load from the weight and applies the load to the tension rope. This configuration passes the load to the specimen through the tension rod and grip. The load is then measured through the load cell mounted on the grips.

Specifications:

- ❖ Maximum creep test: 28KN (6,300 lb)
- ❖ Load applied: Pre-tensioned by screw. Creep load by weight.
- ❖ Load measured by load cell and computer display.
- ❖ Test space: 20,000-25,000mm (65 ft – 82 ft)
- ❖ Weight: Approximately 6 metric tons.(13,300 lb)

Configuration:

- ✓ Load Frame
- ✓ Front and rear crosshead
- ✓ Moving crosshead
- ✓ Adjusting screw
- ✓ Fix bracket
- ✓ Fixed pulley
- ✓ Linear bearing
- ✓ Tension rope and turning bracket
- ✓ Weight to apply creep test
- ✓ Control console
- ✓ Computer
 - ◆ Black Tower Case.
 - ◆ Main Processor: Intel Pentium IV 2.4GHz.
 - ◆ Operating Sys: Microsoft Windows XP Pro.
 - ◆ 512 DDR RAM.
 - ◆ CD/ DVD - Drive.
 - ◆ 120 GB Hard Disk Drive.
 - ◆ Black PS/2 Keyboard.
 - ◆ 17.0" LCD Monitor
 - ◆ Black PS/2 Optical Mouse.



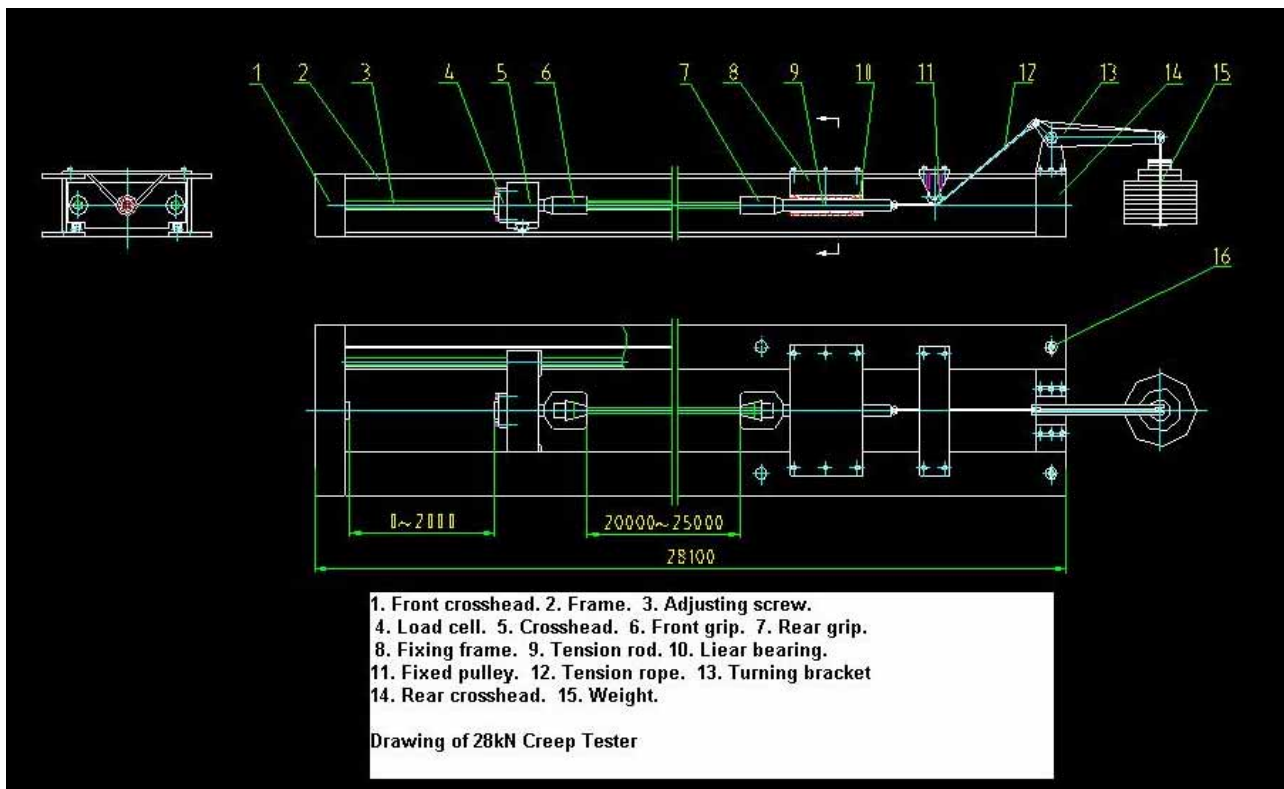
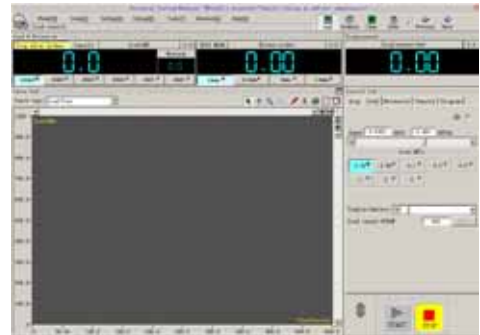


Physical Test Solutions

Innovative Solutions in Material Test Equipment

- ◆ 2 USB 1.1, 2 USB 2.0
 - ◆ Expansion Slots: 3 ISA, 4 PCI
 - ◆ Integrated Sound Card (SB16 Compatible).
 - ◆ Integrated 10/100 Ethernet Adapter.
- ✓ MaxTest software and printer
- ◆ The **PTS Maxtest Software** operates in a windows environment and combines a user friendly working operation with powerful data acquisition and control capabilities. The **PTS MaxTest Software** has the following outstanding features:

- ⇒ Full digital control
- ⇒ Individual or Batch Testing Capabilities
- ⇒ Test Curve Analysis
- ⇒ Convenient & Practical Parameter Settings
- ⇒ Multilevel Security Management
- ⇒ Automatic Program Control
- ⇒ Versatile Test Report Generation
- ⇒ Practical Database Management



16123 Ardath Ave. Gardena, CA. 90249, Tel: (310) 719-1732 Fax: (310) 719-1732
E-mail: info@physicaltestsolutions.com www.physicaltestsolutions.com

